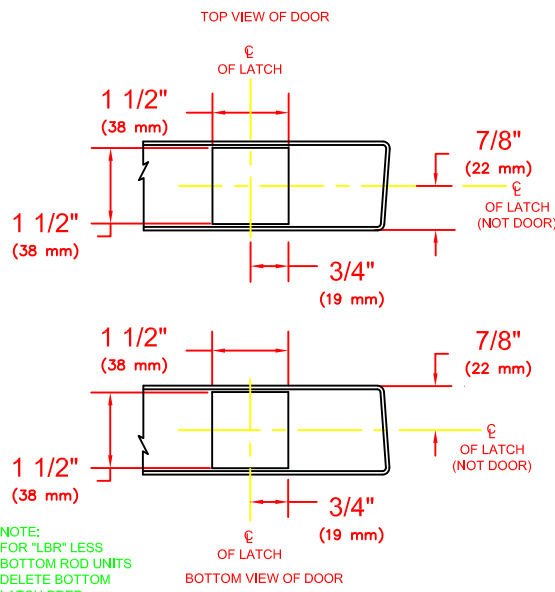
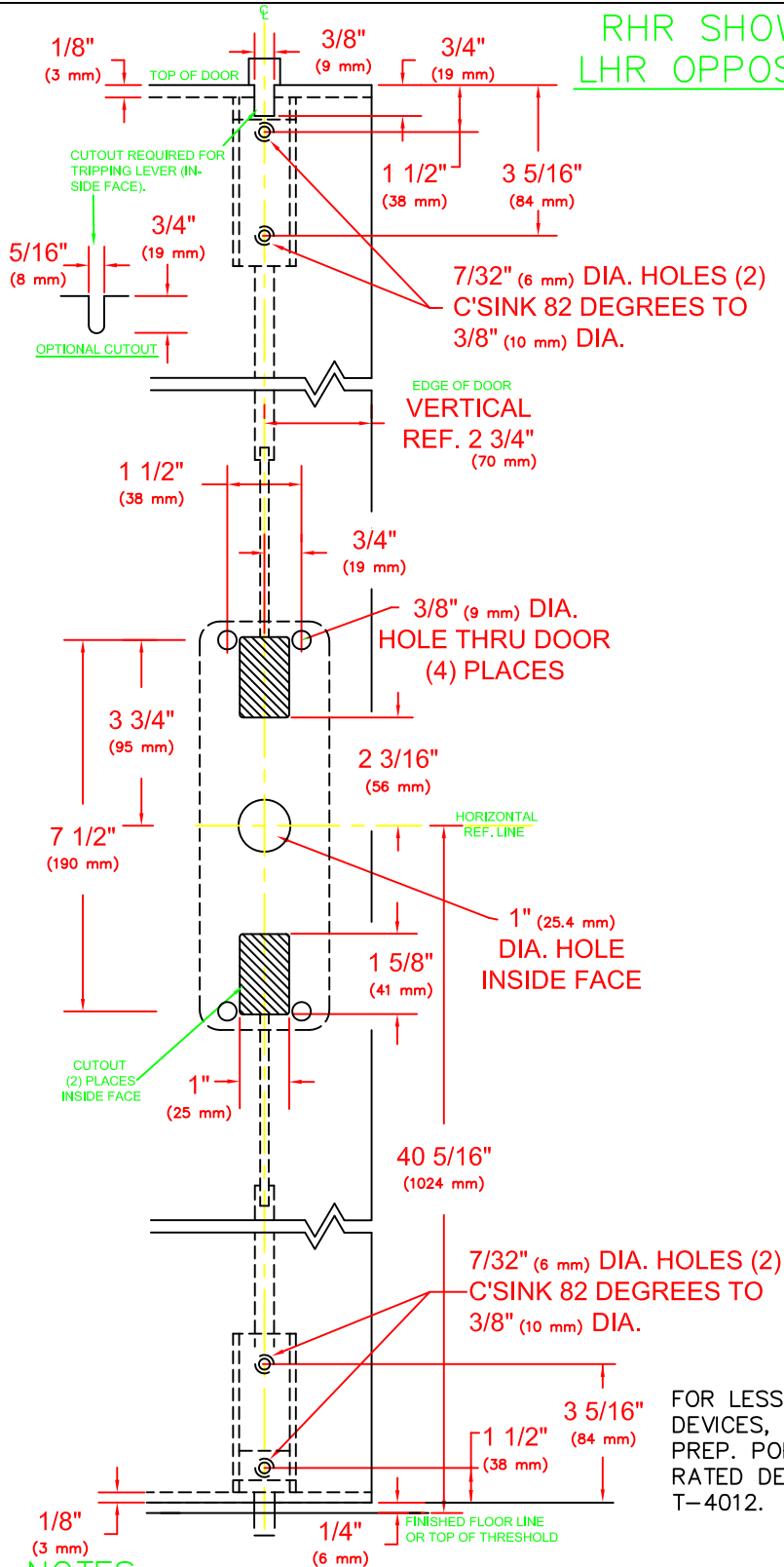
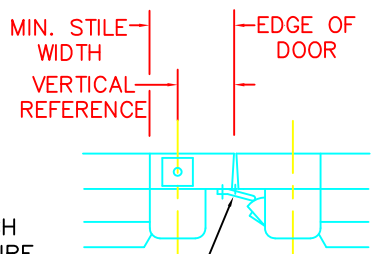
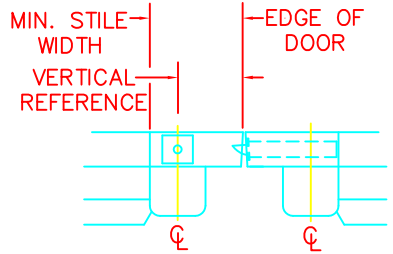
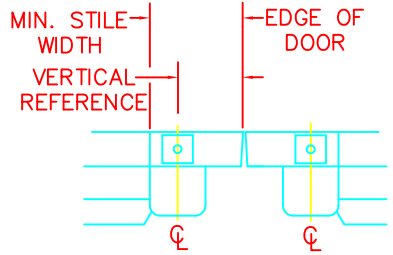


**RHR SHOWN
LHR OPPOSITE**



NOTE:
FOR "LBR" LESS
BOTTOM ROD UNITS
DELETE BOTTOM
LATCH PREP.



OVERLAP STRIKE
FOR 9300 SERIES
MOUNTING LOCATION
SEE APPROPRIATE
9300 TEMPLATES.

FOR LESS BOTTOM ROD (LBR)
DEVICES, DELETE BOTTOM
LATCH PREP. POPPER REQUIRED ON FIRE
RATED DEVICE, SEE TEMPLATE
T-4012.

NOTES:

1. SEE MASTER SHEET #T-0001 FOR SUGGESTED DOOR REINFORCEMENT.
2. SEE ADDITIONAL TRIM TEMPLATE WHEN REQUIRED.
3. DEVICE WILL COVER STANDARD SDI CUTOUT.

VERTICAL REFERENCE	MINIMUM STILE WIDTH
2 3/4" (70 mm)	4 3/16" (106 mm)

REV. No. 4

REVISION: Lever Style Notes

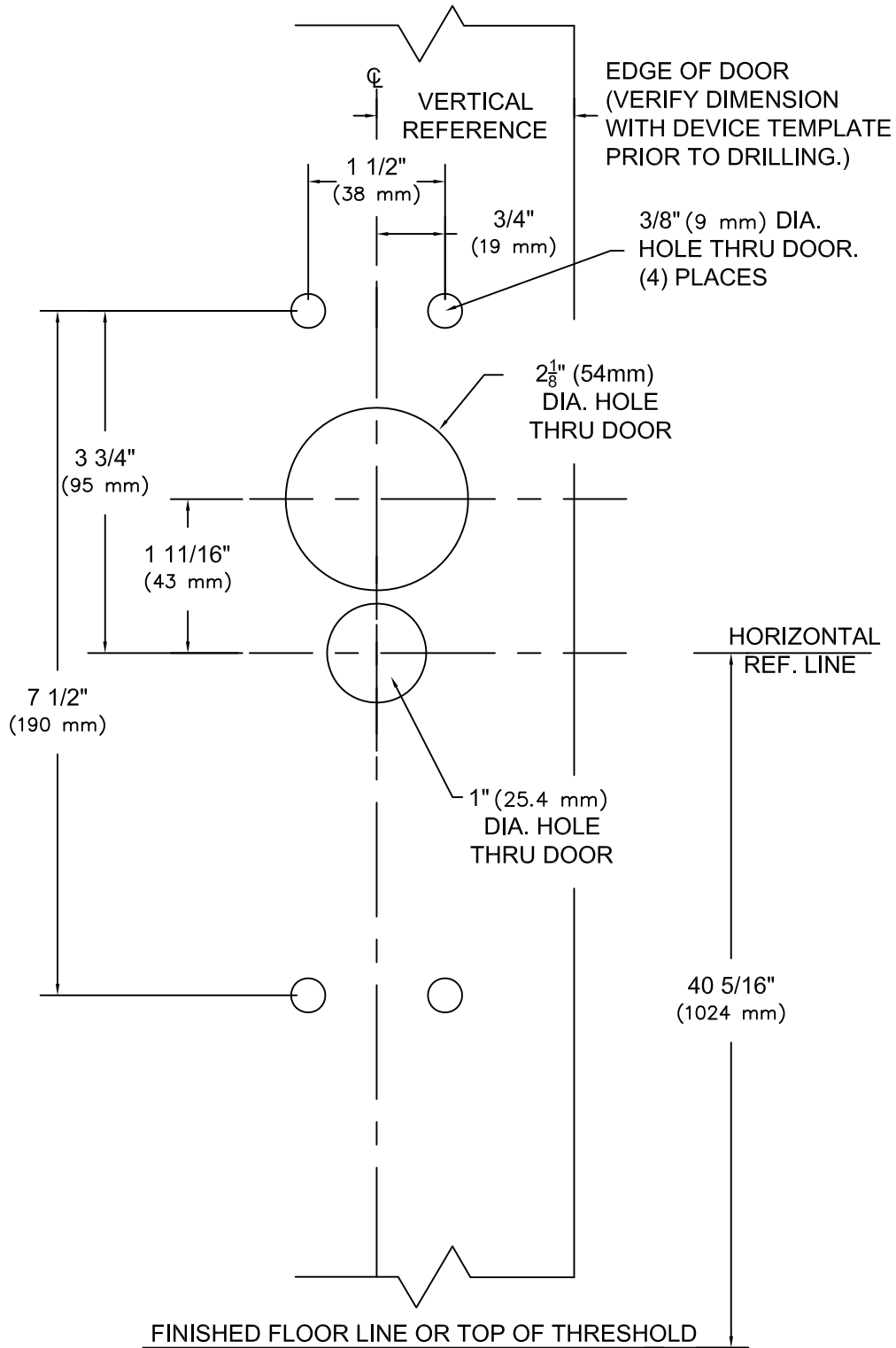
DATE: 1-27-2014



9100 & F9100 x Y*08 /08C, Y*09 / 09C, Y*23
Note; * Denotes all Lever Design Styles
VERTICAL ROD EXIT DEVICE (Aluminum Door)

TEMPLATE NUMBER
T-9135AL
4

RHR SHOWN
LHR OPPOSITE



NOTES:

FINISHED FLOOR LINE OR TOP OF THRESHOLD

1. SEE MASTER SHEET #T-0001 FOR SUGGESTED DOOR REINFORCEMENT.
2. SEE ADDITIONAL DEVICE TEMPLATE WHEN REQUIRED.
3. TRIM WILL COVER STANDARD SDI CUTOUT.

REV. No. 5

REVISION: Lever Style Notes

DATE: 1-16-2014



Y*08, Y*08C, Y*09, OR Y*09C Trim

Note; * Denotes all Lever Design Styles

TEMPLATE NUMBER

T-9007 ⑤